

Uniclass L2226:D94	EPIC C442
CI/SfB	
944	(22.3) X



constructa

commercial washroom systems - cubicles / panelling / vanity units





vanityunits

cutting edge design and user-friendly features are the hallmarks of a decra vanity unit

consul o5

economic laminate vanity units, post-formed apron and/or upstand. optional underpanels available to match cubicle



consul sr o6

cost-effective laminate vanity unit for semi-recessed basins, complete with post-formed apron



senator o9

vandal resistant, waterproof solid laminate vanity unit suitable for under-mounted and inset basins



slabb 10

solid surfacing material vanity unit with an elegant modern appearance



cubicles

a wide range of modern cubicles, to suit every application, is available from decra



o4 lifestyle

economic, general purpose cubicles available in a wide range of colours



11 streamline

high quality, prestige cubicles available in a wide range of standard colours including wood-grain effects



12 barbarian II

rugged toilet cubicle for extreme applications, floor-supported SA aluminium pilaster as standard



o7 executive

standard cubicles available in a comprehensive range of colours



13 deluge

a shower cubicle with a difference, constructed from solid laminate and with translucent acrylic doors



o8 freestyle

vandal-resistant, waterproof cubicles with the option of complementary lockers



14 director

high quality traditional style cubicles, constructed from moisture-resistant MFC with post-formed laminate pilasters

panellingsystems

strong and demountable panelling systems are available to suit a wide range of applications

dukt 16-17

versatile duct and wall panelling system, available with either metal or wooden framework and optional Geberit frames



technicaldetails

for specifications, please see page 15. for technical details, please see pages 18 and 19

consul

vanity unit

lifestyle

cubicle



consul vanity unit features / benefits

highly cost-effective
attractive
complete with apron
optional upstand
optional underpanels
suitable for inset or
top-mounted basins

HP laminate surfaces
moisture-resistant MDF core
wide range of colours,
patterns & textures
supply only or supply
& install

applications

schools
offices
hotels
shops
clubs
factories

finishes shown

consul vanity unit
vanity top: graphite dash
underpanels: nordic maple
lifestyle cubicle
cubicles: nordic maple
ducts: graphite dash
ironmongery: non-standard,
powder coated

> sanitary ware courtesy of Vitra Ltd
> flooring courtesy of Forbo Nairn Ltd

lifestyle cubicle features / benefits

highly cost-effective
general purpose
contemporary appearance
25 standard colours
optional outward-opening doors

moisture-resistant core
melamine-faced particle
board (MFC)
SA aluminium ironmongery
strong ABS edging
supply only or supply & install

applications

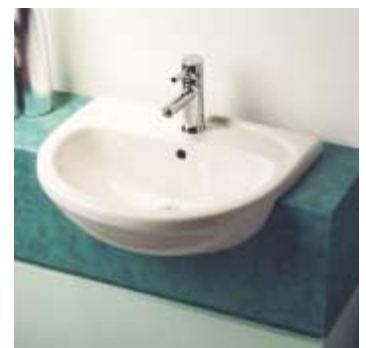
toilet cubicles
changing cubicles
factories
offices
shops
schools

consul sr

vanity unit

executive

cubicle



consul sr vanity unit

features / benefits

inexpensive
attractive
complete with deep apron
optional upstand
optional underpanels
suitable for semi-recessed basins

HP laminate surface
moisture-resistant MDF core
wide range of colours,
patterns & textures
supply only or supply & install

applications

restaurants clubs
schools factories
offices
hotels
shops

finishes shown

consul sr vanity unit
vanity top: steely copper
underpanels: green ice
executive cubicle
cubicles: green ice
ducts: bronze metallic
> sanitary ware courtesy of Vitra Ltd
> flooring courtesy of Forbo Nairn Ltd

executive cubicle

features / benefits

general purpose
cost-effective
hard-wearing
optional outward-opening doors

HP laminate surface
moisture-resistant
particleboard core
wide range of colours,
patterns & textures
supply only or supply & install

applications

toilet cubicles
changing cubicles
factories
offices
shops
schools

senator

vanity unit

freestyle

cubicle



senator vanity unit features / benefits

attractive
strong & hard-wearing
waterproof & vandal-resistant
low whole-life cost
optional upstand
optional underpanels

solid laminate (compact grade) construction
post-formed apron
suitable for top-mounted, under-mounted or inset basins
supply only or supply & install

applications

leisure shops
schools offices
airports hotels
swimming pools clubs
factories

finishes shown

senator vanity unit
vanity top: light blue
underpanels: astral metallic
freestyle cubicle
cubicles: light blue
ducts: astral metallic
> sanitary ware courtesy of Vitra Ltd
> flooring courtesy of Forbo Nairn Ltd

freestyle cubicle features / benefits

strong & hard-wearing
waterproof & vandal-resistant
low whole-life cost
25 standard colours
optional outward-opening doors

solid (compact grade) laminate
rotary indicator bolt
SA aluminium ironmongery
matching lockers & benches
supply only or supply & install

applications

toilet cubicles airports
shower cubicles swimming pools
shopping malls factories
leisure shops
schools sports stadia

slabb

vanity unit

streamline

cubicle



slabb vanity unit features / benefits

attractive, modern appearance
low whole-life cost
waterproof
integral under-mounted basins
repairable

solid-surfacing vanity top
solid-surfacing basins
hidden support framework
supply only or supply & install

applications

leisure offices
schools hotels
airports clubs
swimming pools
shops

finishes shown

slabb vanity unit
vanity top: avonite nougat
basins: special translucent

streamline mfc cubicle
cubicles: dusty green
pilasters: satin anodised
ducts: nutwood

> sanitary ware courtesy of Vitra Ltd
> flooring courtesy of Forbo Nairn Ltd

streamline cubicle features / benefits

modern, prestige appearance
affordable quality
25 standard colours

slim aluminium pilaster
moisture-resistant core
melamine-faced chipboard
SA aluminium ironmongery
supply only or supply & install

applications

toilet cubicles retail
changing cubicles offices
leisure restaurants
schools

barbarian II

cubicle

deluge

cubicle



barbarian II cubicle

features / benefits

upmarket appearance
modern
strong & hard-wearing
vandal-resistant
waterproof

SA aluminium pilaster to ground
strong headrail
solid laminate construction
SA aluminium ironmongery
optional stainless steel facings
supply only or supply & install

applications

motorway service stations
public buildings
schools
shopping malls
shower areas
sports stadia
swimming pools
prisons

finishes shown

cubicles: watery green
pilasters: SA aluminium
ducts: cherry red
> flooring courtesy of Forbo Nairn Ltd

deluge cubicle

features / benefits

stylish design
translucent
shatterproof door
waterproof

solid laminate partitions
solid (compact grade)
laminate pilasters
rotary indicator bolt
SA aluminium ironmongery
acrylic doors with stainless
steel pull handle
supply only or supply & install

applications

shower cubicles
toilet cubicles
changing cubicles
leisure
restaurants
hotels
clubs
health spas

finishes shown

doors: lemon sorbet
pilasters: acrylic
almond
> flooring courtesy of Freudenberg
Building Systems UK Ltd

director

cubicle

specification

cubicles & vanity units



	lifestyle	executive	freestyle	streamline	barbarian II	deluge	director	
cubicles								
Doors								
●		●		●			●	19mm moisture-resistant melamine-faced chipboard
			●	■	●	○	■	19mm o/a, high-pressure laminate on moisture-resistant chipboard
								13mm solid laminate (compact grade)
						●		10mm acrylic
Partitions								
●			●				●	19mm moisture-resistant melamine-faced chipboard
		●	■	●	■	●	■	19mm o/a, high-pressure laminate on moisture-resistant chipboard
								13mm solid laminate (compact grade)
								13mm solid laminate (compact grade) with stainless steel facing
Pilasters								
●								19mm moisture-resistant melamine-faced chipboard
		●						19mm o/a, high-pressure laminate on moisture-resistant chipboard
			●					13mm solid laminate (compact grade)
				●	●			130mm wide aluminium extrusion
							●	Post-formed high-pressure laminate on 34mm moisture-resistant chipboard
Panel Edging								
●	○		●				●	2mm ABS
	●							High-pressure laminate
			●	●	●			Crescent safety edge & radiused corners
Ironmongery								
●	●		●	●			●	Satin anodised foot, indicator bolt, hinges, coathooks, cleats, headrail
								Stainless steel foot, indicator bolt, hinges, coathooks, cleats, headrail
		●				●		Satin anodised foot, rotary latch, hinges, coathooks, cleats, headrail
Duct Panels								
●			●				●	19mm moisture-resistant melamine-faced chipboard, square edges
	●							19mm o/a, high-pressure laminate on moisture-resistant chipboard, square edges
		■	■	●	●		■	19mm o/a, high-pressure laminate on moisture-resistant chipboard, post-formed edges
								13mm solid laminate (compact grade)

	consul	consul sr	senator	slabb	
vanity units					
Top					
●	●				Post-formed 20mm o/a high-pressure laminate on moisture-resistant MDF
					Post-formed 13mm solid laminate (compact grade)
				●	Solid surfacing material on moisture-resistant substrate
Underpanels					
●	●				19mm moisture-resistant melamine-faced chipboard, square edges
■	■				19mm o/a, high-pressure laminate on moisture-resistant chipboard, square edges
					19mm o/a, high-pressure laminate on moisture-resistant chipboard, post-formed edges
			●		13mm solid laminate (compact grade)

TABLE KEY: ● Supplied as standard ○ Available at no extra cost ■ Available at extra cost

<p>director cubicle features / benefits</p> <ul style="list-style-type: none"> traditional stylish robust 25 standard colours 	<p>deep post-formed pilaster</p> <p>post-formed headrail</p> <p>moisture-resistant core</p> <p>melamine-faced particleboard construction</p> <p>supply only or supply & install</p>	<p>applications</p> <ul style="list-style-type: none"> toilet cubicles schools airports offices restaurants hotels shops 	<p>finishes shown</p> <ul style="list-style-type: none"> cubicles: cherry gold, purple metallic, cherry gold pilasters: cherry gold ducts: cherry gold <p>> flooring courtesy of Freudenberg Building Systems UK Ltd</p>
--	---	---	--

dukt

panelling system



dukt panelling system

features / benefits

cubicle ducts
urinal ducts
basin ducts
wall panelling
easy-to-plumb support
frames for urinals, basins
& toilet pans

strong metal frames
economic softwood frames
panels available in MFC,
laminated & solid laminate
(compact grade)
supply only or supply & install
demountable

applications

offices
leisure
restaurants
hotels
clubs
health spas

airports
shopping
malls

finishes shown

panels: astral metallic
flashgaps: black

> sanitary ware courtesy of Vitra Ltd
> flooring courtesy of Freudenberg
Building Systems UK Ltd
> plumber frames courtesy of Geberit

technical details

technical details

cubicles

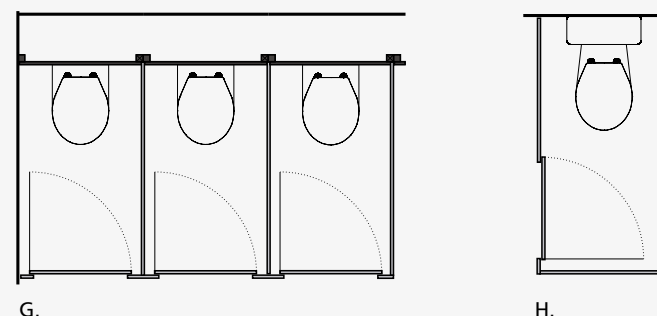
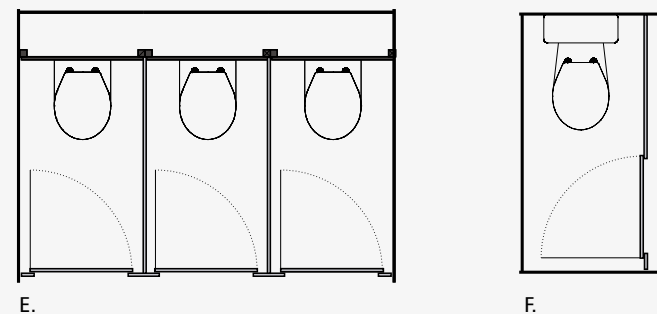
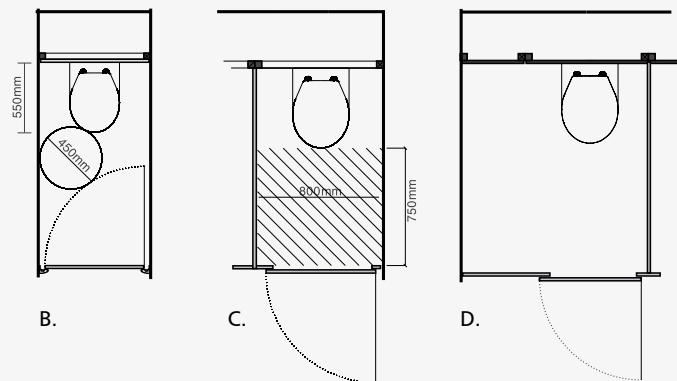
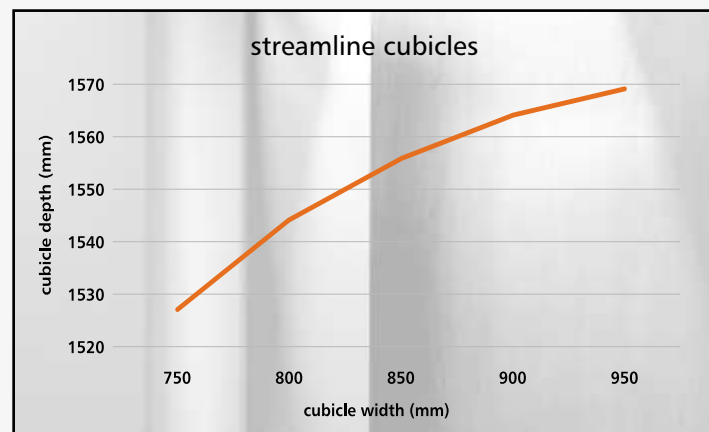
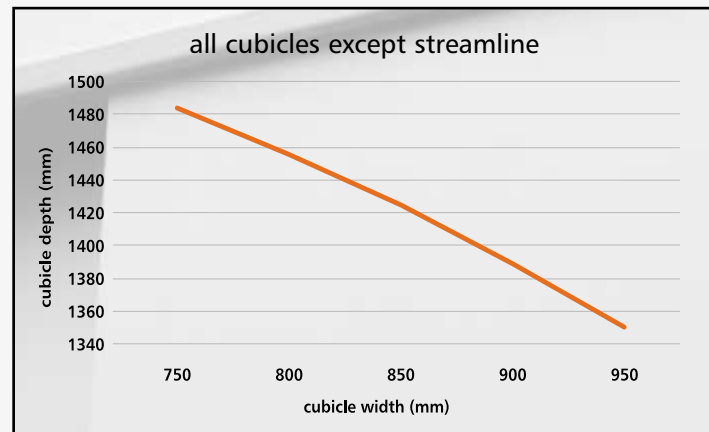
Standard Cubicles

All our cubicles are made-to-measure. A standard cubicle measures 1960mm high including 150mm floor clearance. Our cubicles will be supplied to this height unless specified otherwise. Diagram A lists the standard components of a cubicle system.

Other cubicle dimensions are determined by the space available and the projection of the toilet pan from the wall. Accessibility concerns also influence layout. Recommended sizes for toilet cubicles are approx 1500mm deep x 800-850mm wide.

For standard cubicles, it is good practice to allow a minimum 450mm diameter 'manoeuvring space' between the swing of the door, the w.c pan and the side wall of the cubicle (see diagram B).

Please use the charts below to find the minimum cubicle dimensions, where the toilet pan extends 550mm from the rear wall.



Ambulant-disabled cubicles

Ambulant-disabled cubicles should have an outward opening door and a 750mm deep activity area, in front of the toilet pan and clear of any door swing (if inward opening doors are a necessity).

They should be a minimum of 800mm wide by 1500mm deep with a clear-entry greater than 650mm wide. Please see diagram C.

Streamline cubicles need to be 880mm wide to obtain a 650mm clear-entry.

Extended-width cubicles

Good practice would also include an extended-width cubicle in each run of four or more cubicles. An extended-width cubicle is 1200mm wide. Please see Diagram D.

For more information see:

- Building Regulations 2000, approved Document M, 2004 edition.
- The Good Loo Design Guide, © Centre for Accessible Environments & RIBA Enterprises 2004

Specifying.

On page 15 of this brochure you will find a specification matrix that provides details of each range. Complete specifications can also be downloaded in easy to view Microsoft Word and Adobe PDF formats from our website www.dekra.co.uk

The diagrams on the left illustrate the various layout options available:

E. Between walls cubicles
Range of three cubicles between walls, left hand hung doors shown.

F. In-line cubicles
One cubicle in-line between walls, left-hand hung door shown.

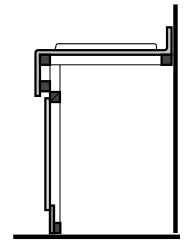
G. Flank wall cubicles
Range of three cubicles from flank wall, left-hand hung doors shown.

H. In-line cubicles
One cubicle in-line from flank wall, right-hand hung door shown.

vanity units

I. Inset basins

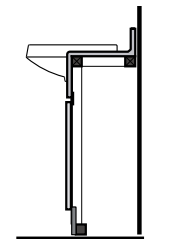
For inset, top-mounted or under-mounted basins, vanity units are 600mm deep with a 200mm post-formed front apron (downstand). A 100mm covered upstand may be incorporated.



I.

J. Semi-recessed basins

For semi-recessed basins, the tops are 300mm deep with a 300mm downstand. A 100mm covered upstand may be incorporated.



J.

Vanity units are typically set at 800mm above the floor (to basin height), and underpanels allow for a 100mm skirting (fitted by others). Vanity tops can be supported by our support brackets, factory-made framing or a site-built softwood frame.

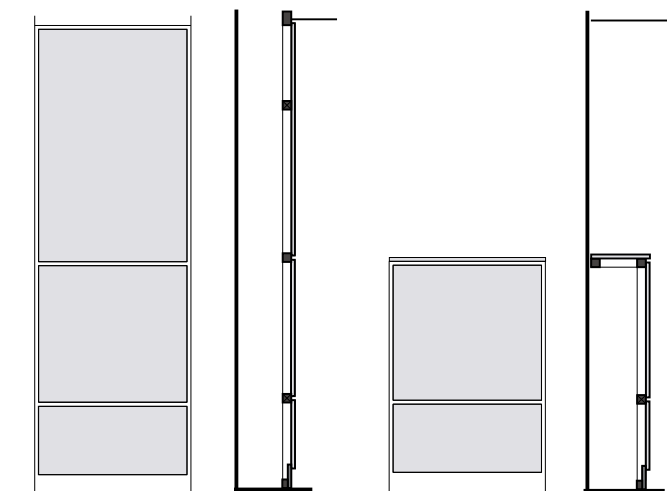
panelling systems

Our ducting systems are expertly tailor-made to suit individual site conditions. Mid-height ducts are typically 1200mm high and full-height typically 2400mm.

Ducts usually need to be at least 300mm deep, often more.

K. full-height ducts
Section through typical full-height duct

L. Half-height ducts
Section through typical half-height duct



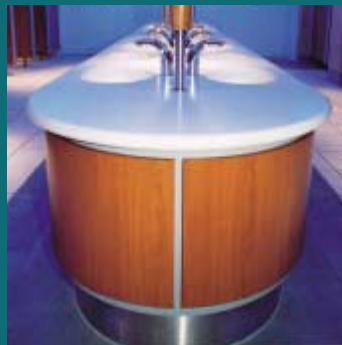
K.

L.

architectura™

also available from decra limited, the architectura™ range is designed to work alongside the constructa range offering even more flexibility. the architectura™ range is particularly suitable for the more individual, advanced projects

please contact us for an architectura™ brochure containing the full range



34 Forest Business Park
Argall Avenue, London
E10 7FB

Tel: 020 8520 4371
Fax: 020 8521 0605
Email: info@decraltd.co.uk
Web: www.decraltd.co.uk

decra limited gratefully acknowledges the kind assistance of the following companies in the production of this brochure:

Vitra Limited
www.vitrauk.com

Freudenberg Building Systems UK Ltd
www.norament.com

Forbo Nairn Limited
www.forbo-nairn.co.uk

Polyrey Limited
www.polyrey.com

The information contained in this document is given to the best of our knowledge and is accurate at time of going to press. All colours and finishes are as accurate as the print process will allow. We reserve the right to change specifications as our policy is one of constant development.

Where specification is critical, please contact decra to ensure that you have the latest available information; decra limited will not be held responsible for any problems or costs arising from information contained in this document that has been superseded.

Brochure design by Harris Associates Limited. www.harris-associates.com